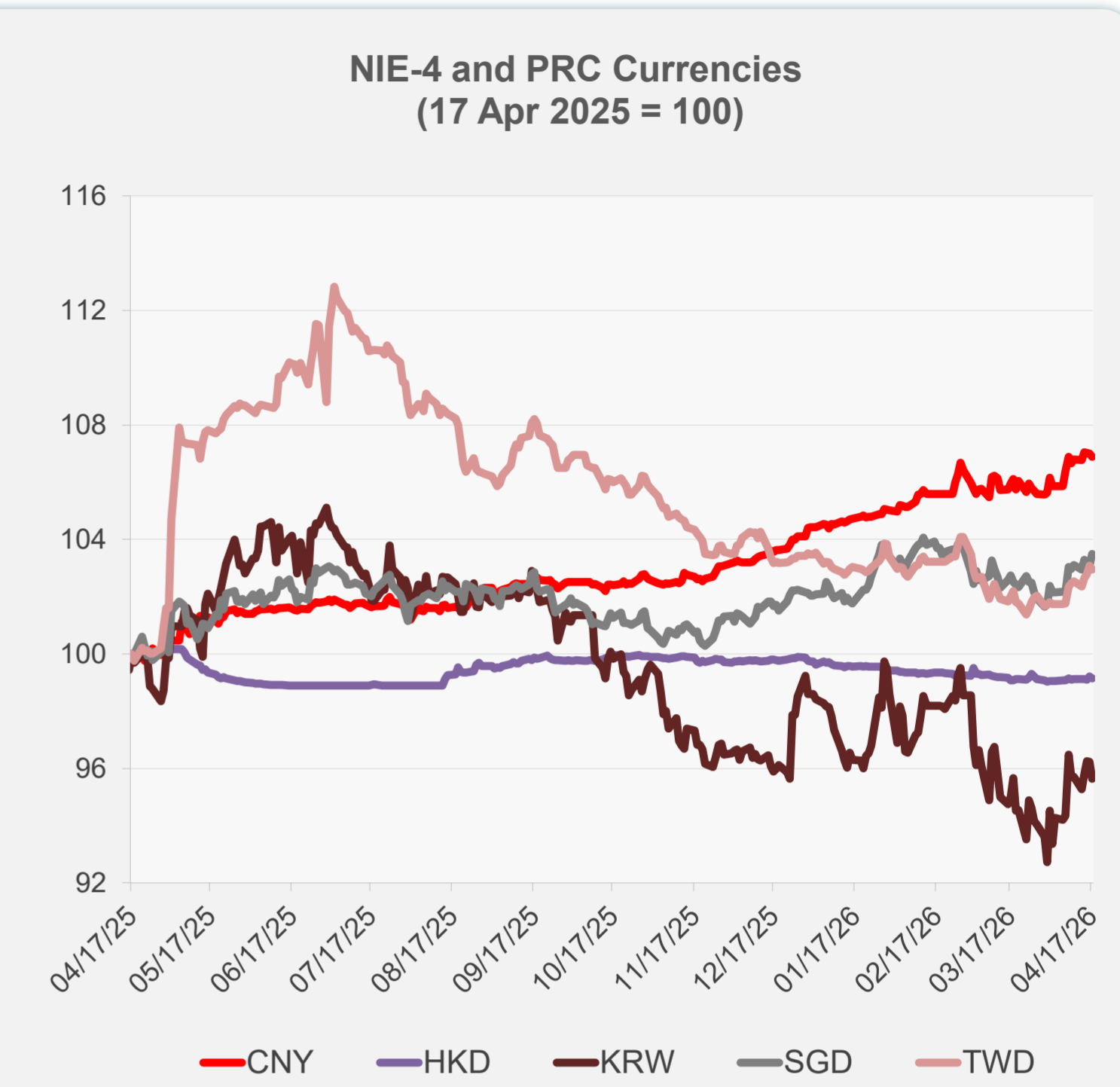
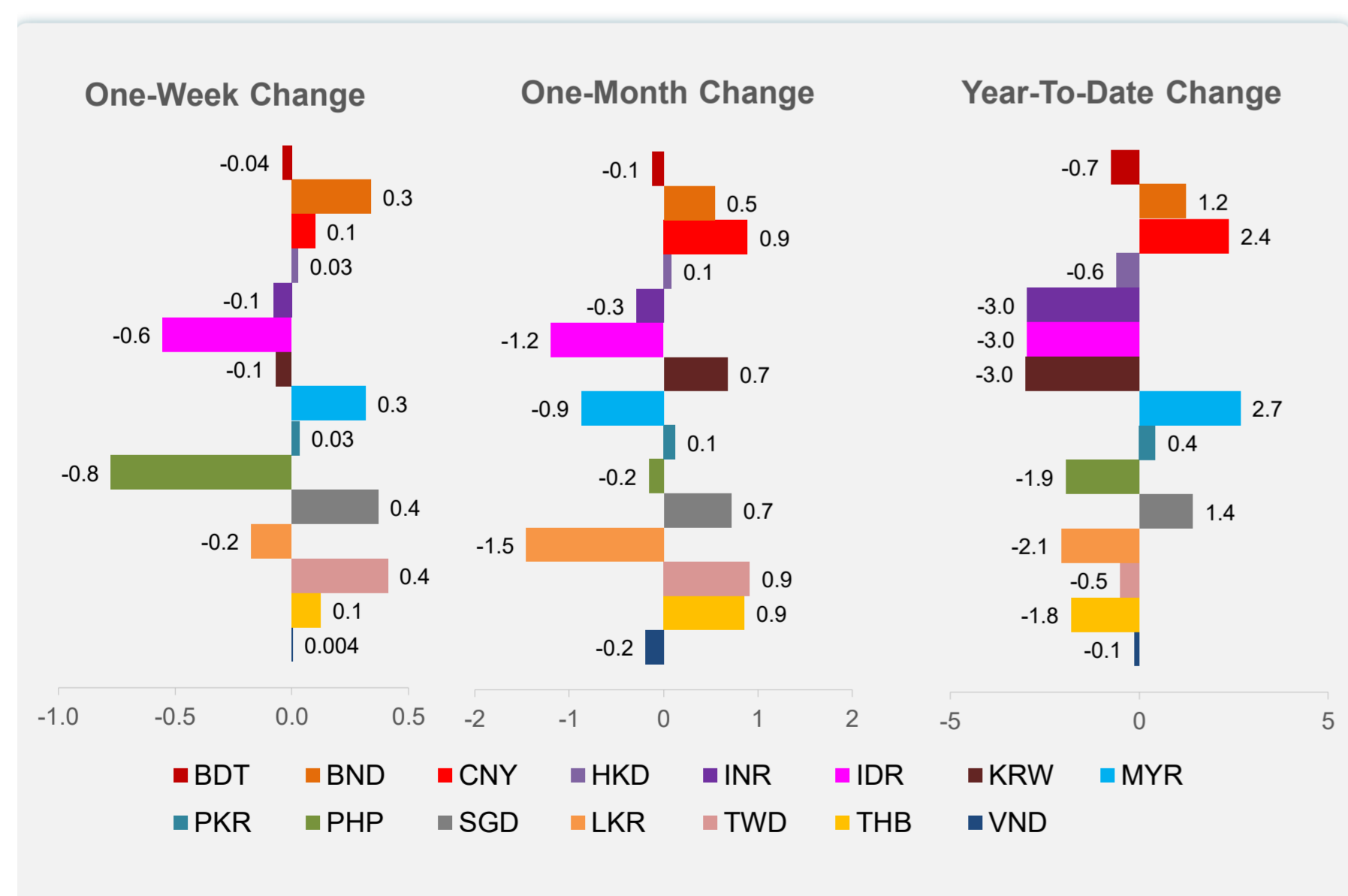
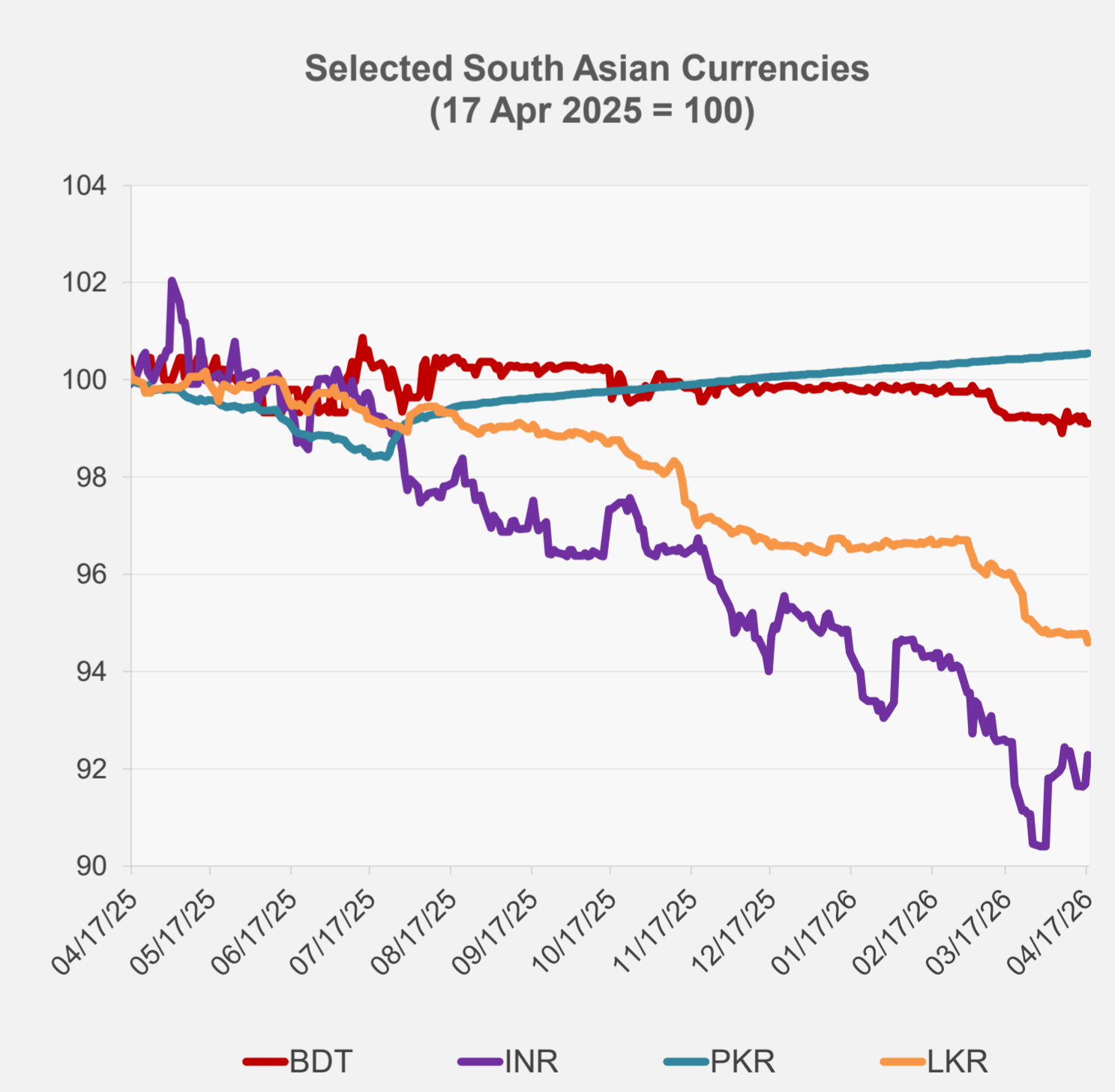
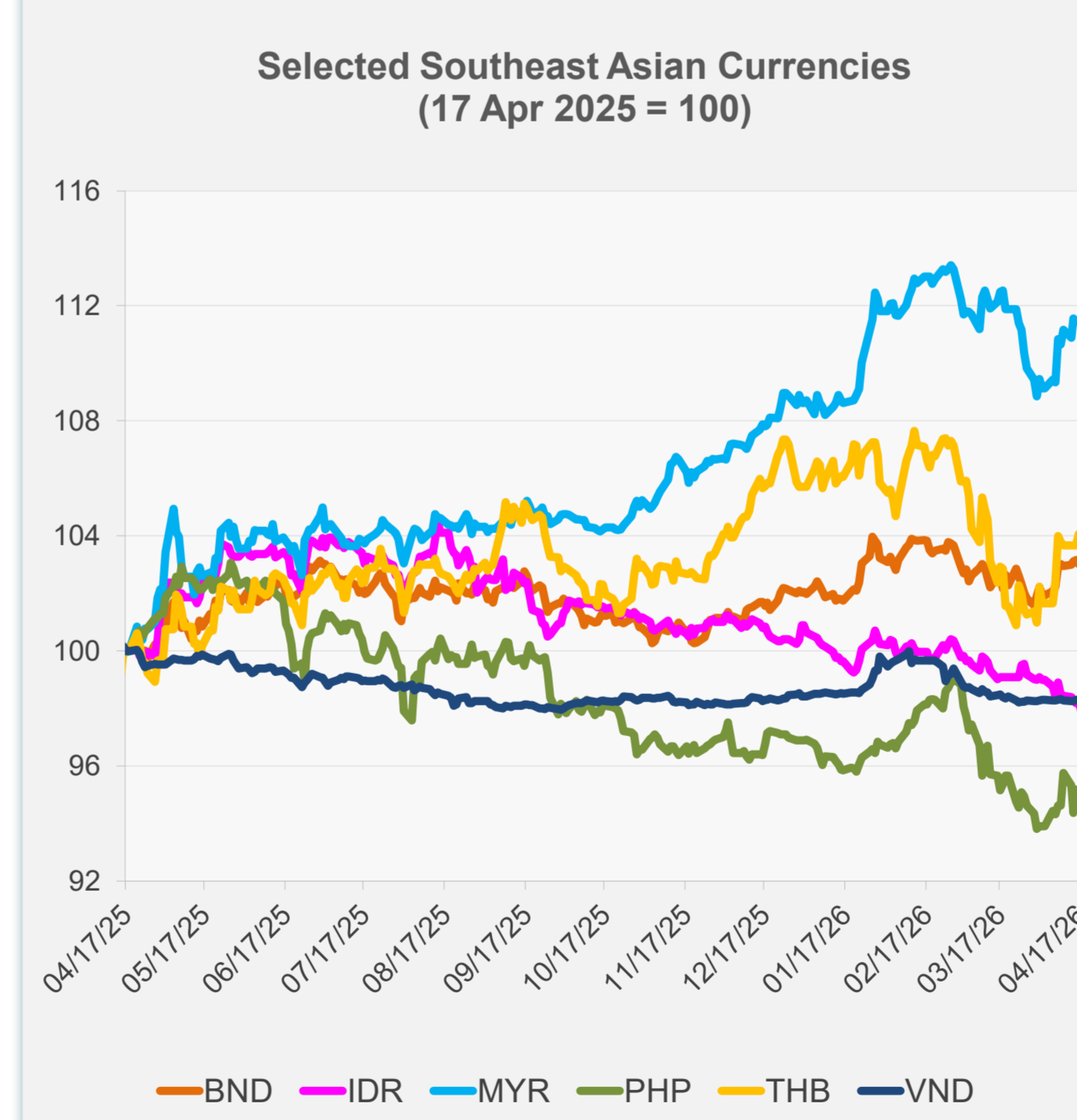


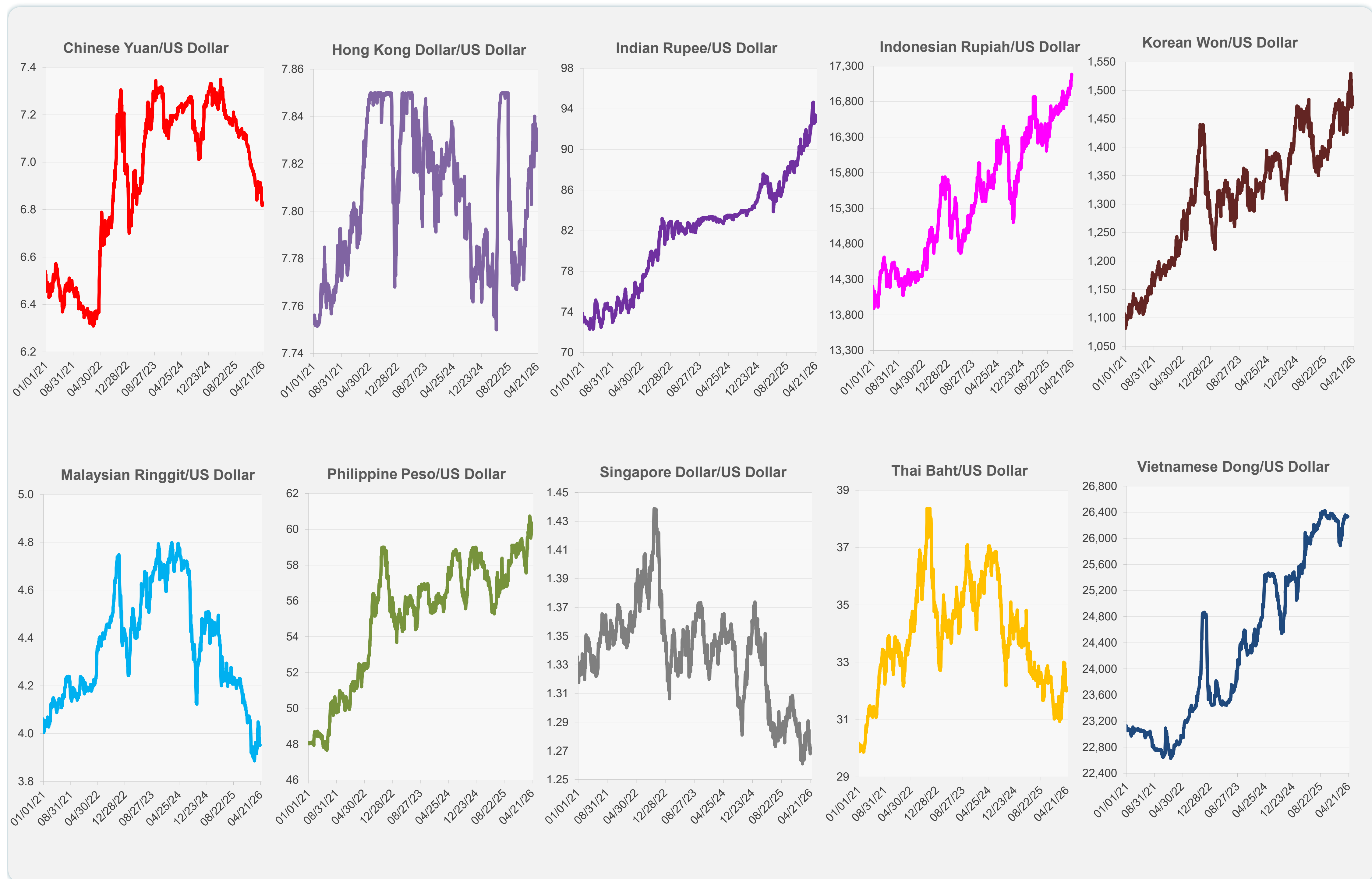
	Latest Closing	% change from Previous Day	% change from 01-Jan-26
Euro	0.85	0.37	0.59
Japanese yen (JPY)	159.27	-0.25	-2.07
Bangladeshi taka (BDT)	123.15	0.00	-0.73
Brunei dollar (BND)	1.27	0.28	1.23
Chinese yuan (CNY)	6.83	-0.10	2.37
Hong Kong dollar (HKD)	7.83	-0.05	-0.59
Indian rupee (INR)	92.72	0.66	-2.96
Indonesian rupiah (IDR)	17,185.00	-0.32	-2.97
Korean won (KRW)	1,483.50	-0.60	-3.00
Malaysian ringgit (MYR)	3.95	0.04	2.67
Pakistan rupee (PKR)	278.91	0.01	0.43
Philippine peso (PHP)	59.97	-0.02	-1.94
Singapore dollar (SGD)	1.27	0.39	1.42
Sri Lanka rupee (LKR)	316.10	-0.19	-2.06
Taipei,China NT dollar (TWD)	31.60	-0.13	-0.50
Thai baht (THB)	32.08	-0.26	-1.80
Vietnamese dong (VND)	26,335.00	-0.02	-0.13



NIE = Newly Industrialized Economies



Note: Negative/Decreasing values indicate depreciation of local currency, and positive/increasing values indicate appreciation.  
Source: ADB calculations using data from Bloomberg and Haver Analytics.

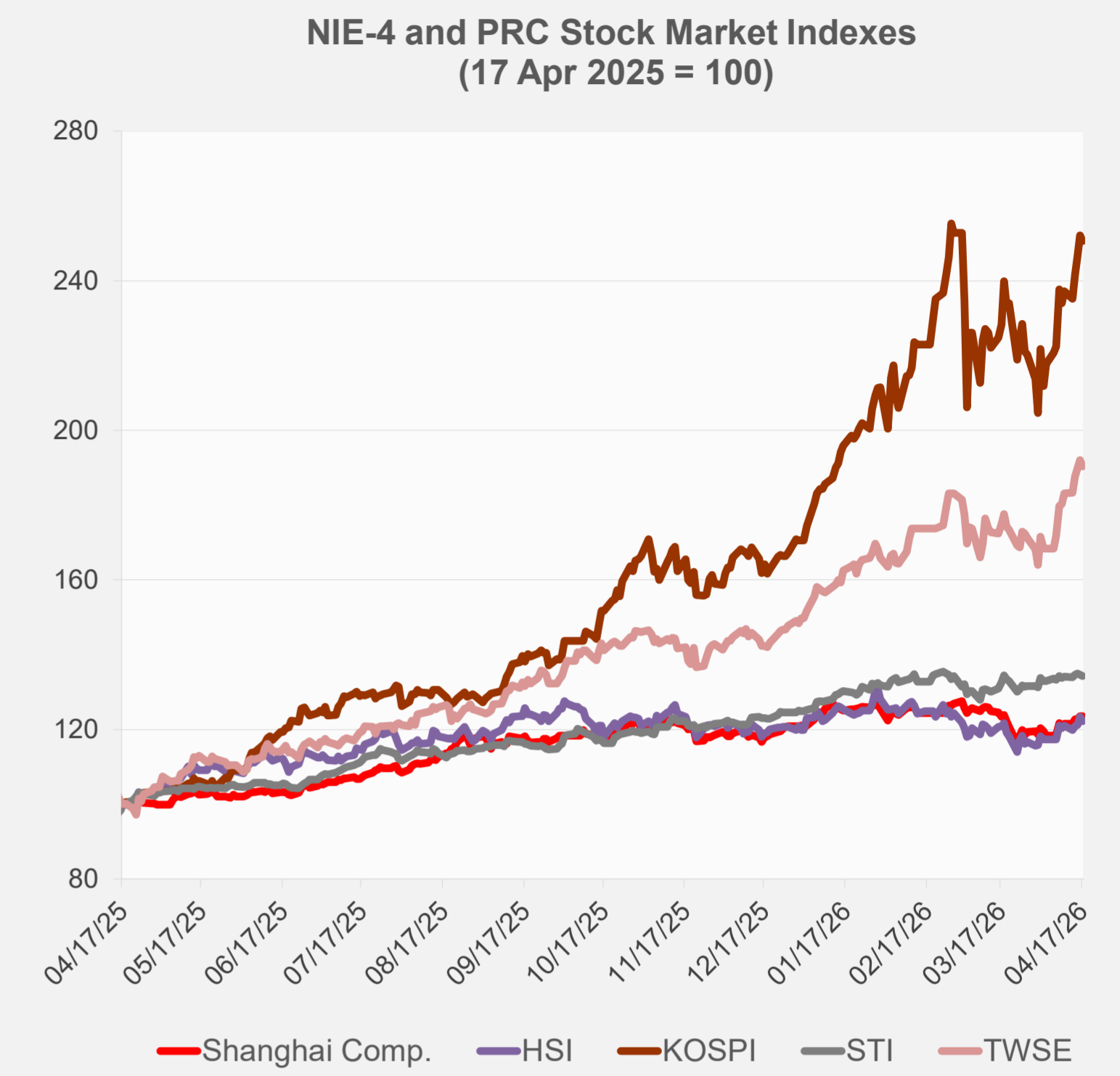


Source: Haver Analytics.

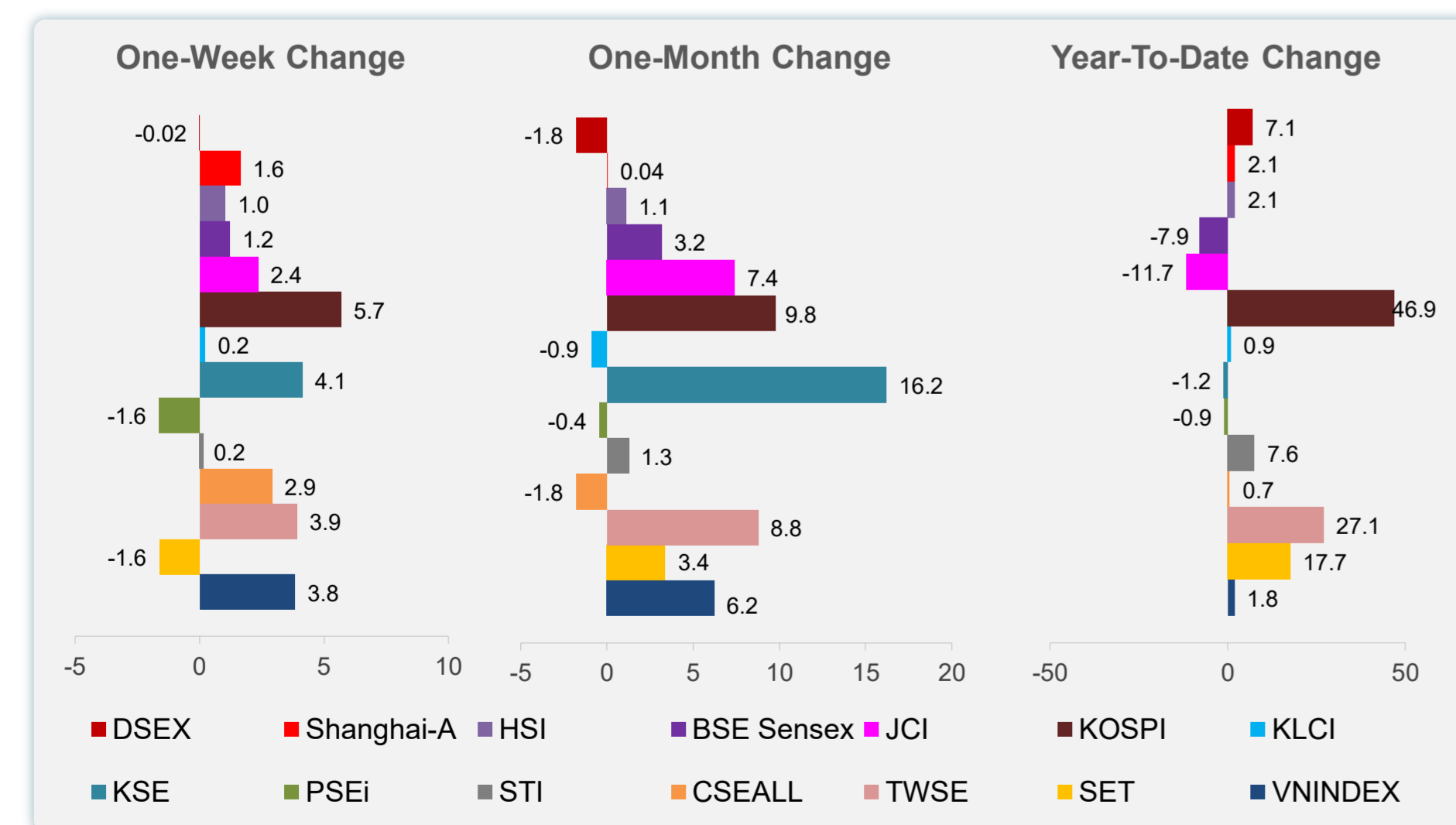
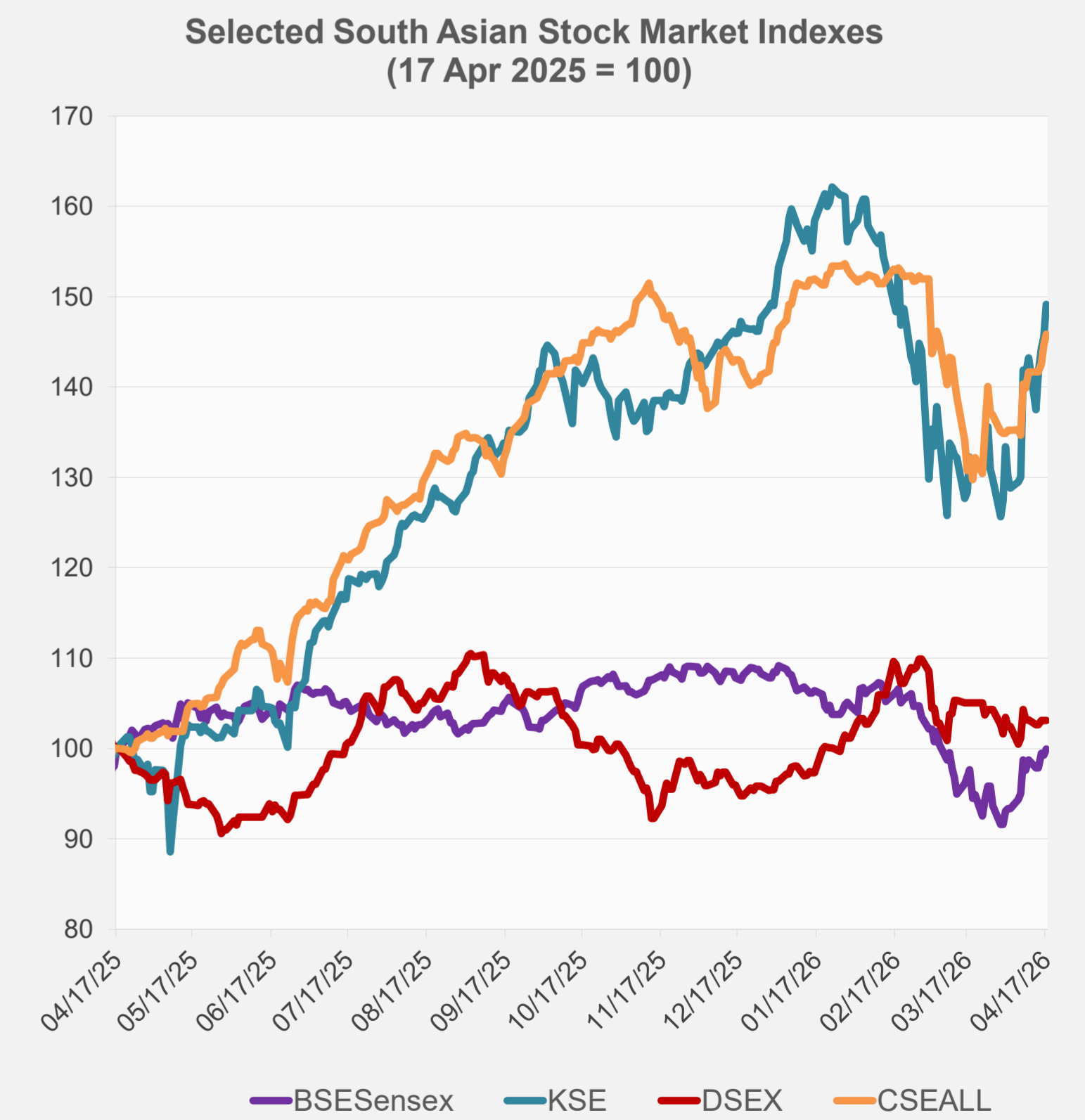
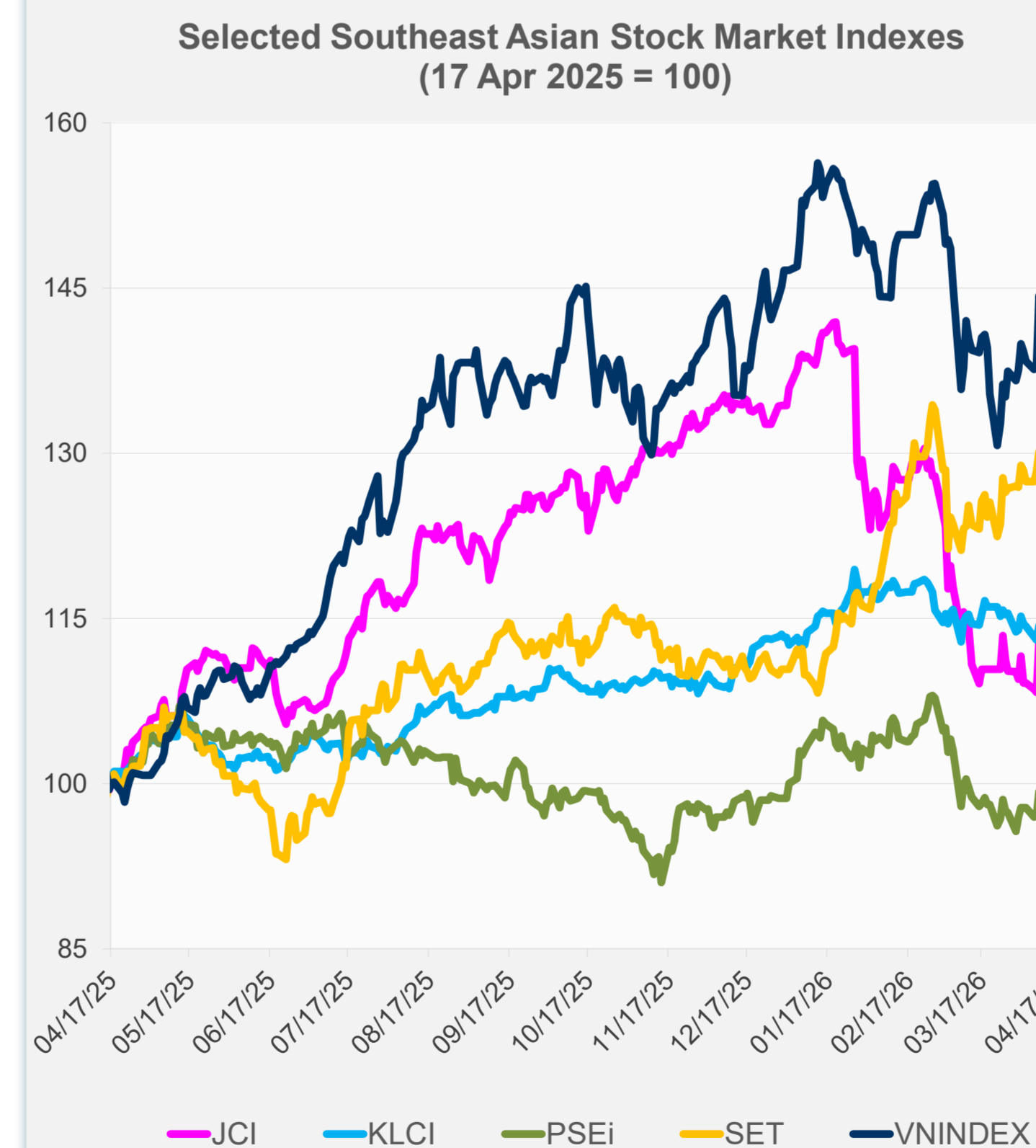
# Daily Market Watch STOCK INDEXES

20 April 2026, 9:00 AM Manila

	Latest Closing	% change from Previous Day	% change from 01-Jan-26
US Dow Jones Ind Avg	49,447.43	1.79	2.88
US NASDAQ	24,468.48	1.52	5.28
US S&P 500	7,126.06	1.20	4.10
UK FTSE 100	14,587.93	2.72	29.54
EURO STOXX 50	6,057.71	2.10	4.60
Japan NIKKEI 225	58,475.90	-1.75	16.16
Bangladesh DSEX	5,256.84	0.00	7.05
PRC Shanghai Comp.	4,051.43	-0.10	2.08
Hong Kong, China HSI	26,160.33	-0.89	2.07
India BSE Sensex	78,493.54	0.65	-7.86
Indonesia JCI	7,634.00	0.17	-11.71
Korea, Rep. of KOSPI	6,191.92	-0.55	46.93
Malaysia KLCI	1,695.21	0.33	0.90
Pakistan KSE 100	174,377.90	2.52	-1.19
Philippines PSEi	5,999.13	-1.06	-0.89
Singapore STI	4,997.93	-0.20	7.57
Sri Lanka CSEALL	22,773.29	0.82	0.66
Taipei, China TWSE	36,804.34	-0.88	27.07
Thailand SET	1,482.45	-0.49	17.69
Viet Nam VNINDEX	1,817.17	-0.15	1.83



NIE = Newly Industrialized Economies



Sources: ADB calculations using data from Bloomberg and CEIC Data Company.

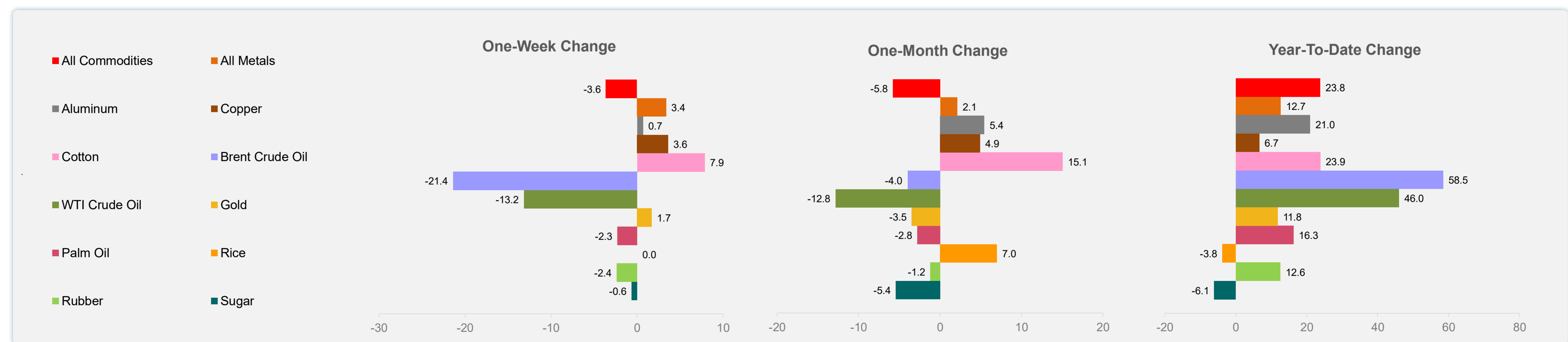
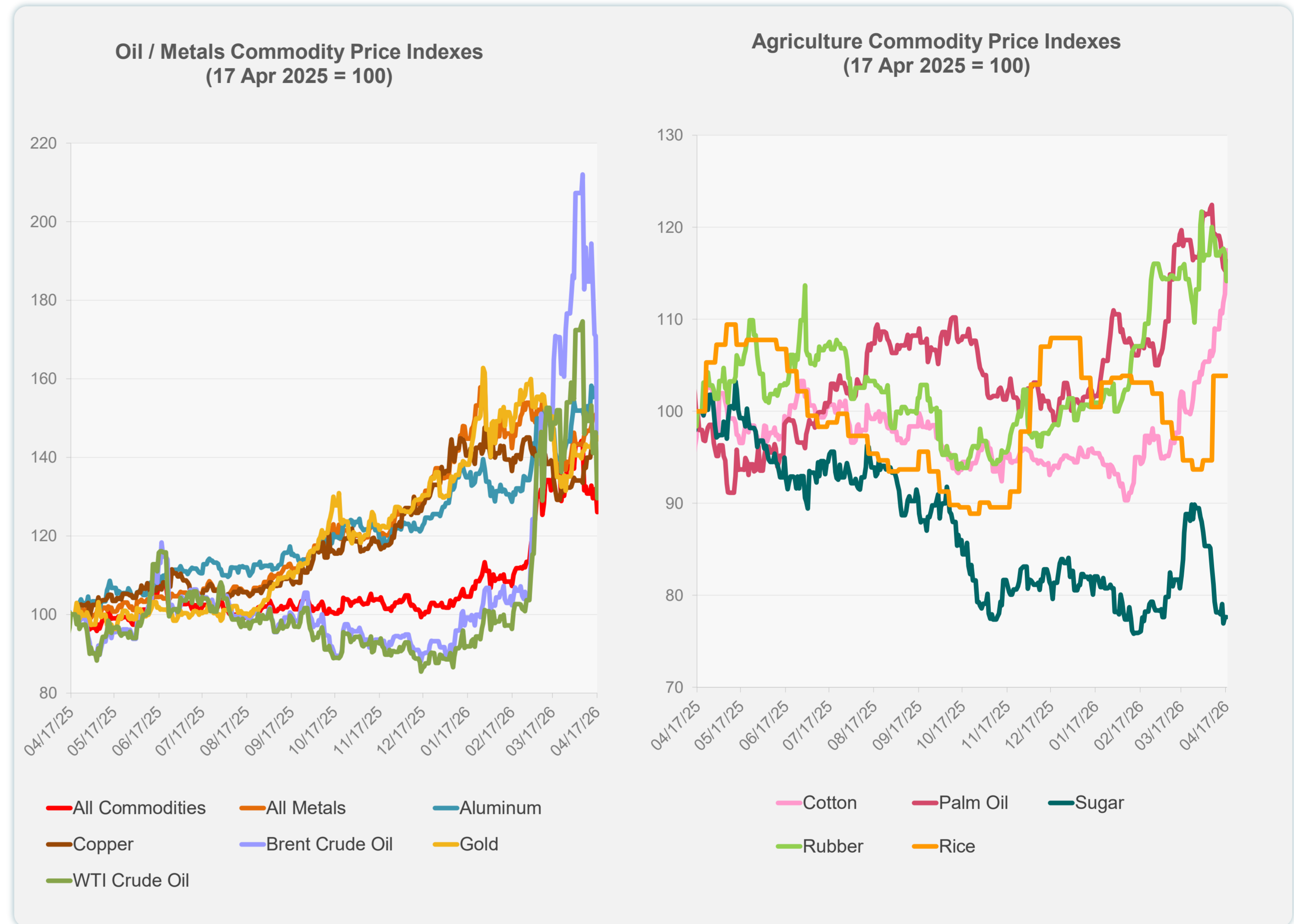


Sources: ADB calculations using data from Bloomberg and CEIC Data Company.

Daily Market Watch  
**COMMODITY PRICES**

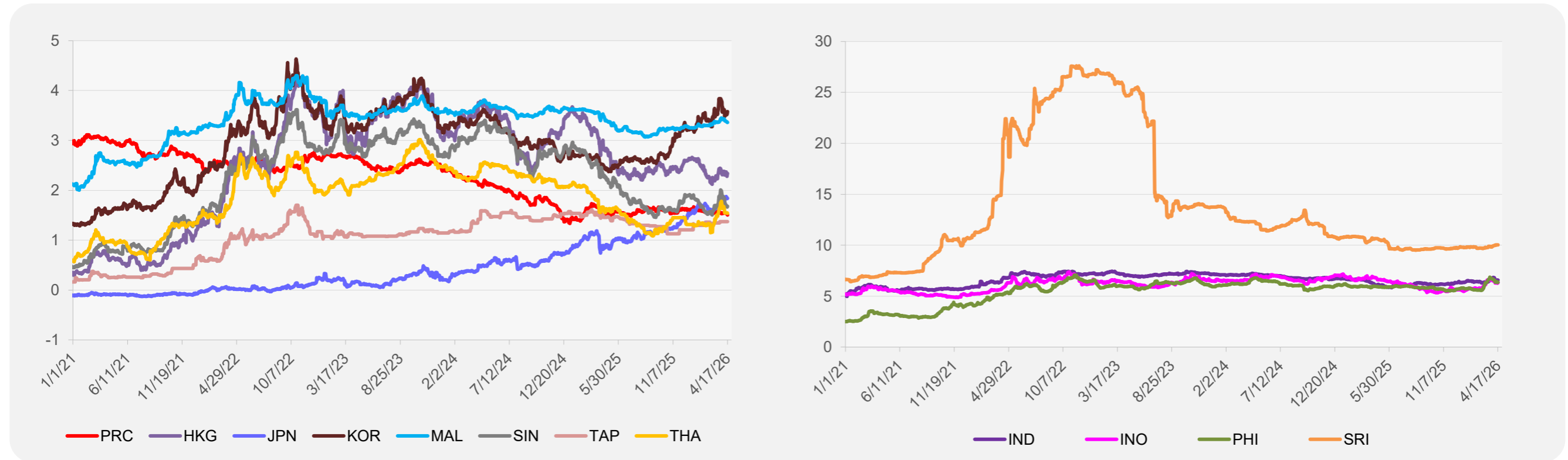
	Unit	Latest Closing	% change from Previous Day	% change from 01-Jan-26
S&P All Commodities	US\$	679.10	-4.45	23.81
S&P All Metals	US\$	499.99	0.74	12.67
Aluminum	US\$/metric ton	3,589.95	-2.41	20.96
Copper	US\$/metric ton	13,281.92	0.57	6.65
Cotton	US cents/lb	76.82	4.23	23.86
Brent Crude Oil	US\$/barrel	98.95	-15.03	58.45
WTI Crude Oil	US\$/barrel	83.85	-11.45	46.03
Gold	US\$/troy oz	4,830.34	0.84	11.83
Palm Oil	US\$/metric tonne	1,126.06	0.87	16.25
Rice <sup>1</sup>	US\$/metric ton	429.00	0.00	-3.81
Rubber <sup>2</sup>	US\$/kg	242.00	-2.58	12.56
Sugar	US cents/lb	13.89	0.00	-6.09

<sup>1</sup> Latest closing price from 8 April 2026.  
<sup>2</sup> Singapore Exchange, Ribbed Smoked Sheet Rubber.

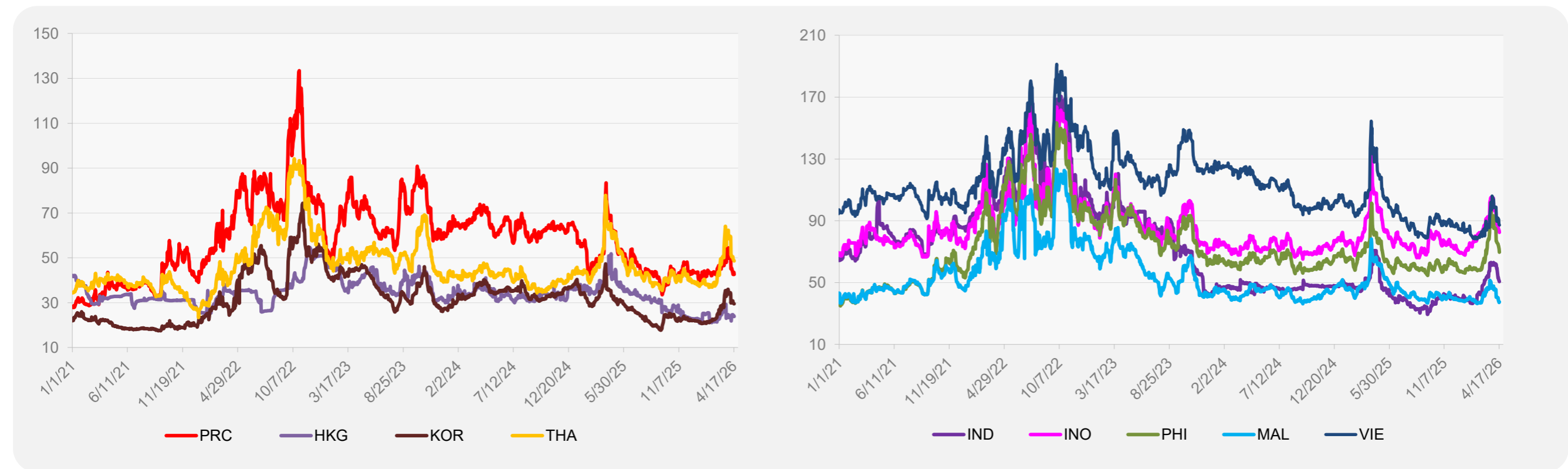


Source: ADB calculations using data from Bloomberg.

### 5-YEAR LOCAL CURRENCY GOVERNMENT BOND YIELDS (%)



### 5-YEAR CREDIT DEFAULT SWAP<sup>1</sup>



<sup>1</sup> In USD and based on sovereign bonds.  
Source: ADB calculations using data from Bloomberg.